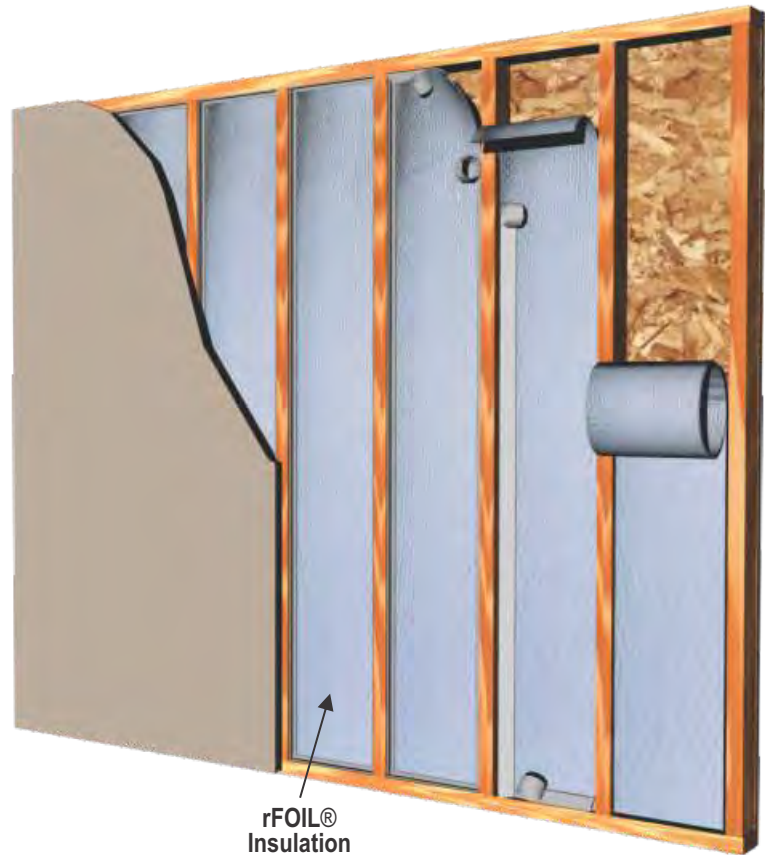


- HELPS TO REDUCE BASEMENT DAMPNESS, AND INCREASES COMFORT
- REDUCES HEAT LOSS TO THE SURROUNDING ENVIRONMENT
- EXCELLENT VAPOR AND RADON BARRIER
- UNAFFECTED BY MOISTURE AND HUMIDITY
- QUICK AND EASY TO INSTALL - ADDS R-VALUE

### INSTALLATION METHOD

1. Unroll rFOIL® insulation inside the stud cavity at the midpoint of the 3 1/2" side of the 2-by-4 wood studs spaced at 16" on center.
2. Staple the rFOIL® insulation along the staple tabs and affix to the studs.
3. Seal all edges with rFOIL® tape to ensure a continuous insulation and vapor barrier.
4. Install drywall as per the usual method. The recessed insulation material will create the necessary airspace require for reflective insulation.



### SUGGESTED PRODUCTS FOR THIS APPLICATION

rFOIL® INSULATION PRODUCT	2222 Series
rFOIL® TAPES	15072 or 15073 (Metalized)

- a) Check local building codes for compliance before installation. This installation sheet is intended solely to illustrate the proper location and placement of rFOIL® Reflective Insulation products in specific constructions applications. They are not intended to illustrate proper construction methods (which is ultimately the responsibility of the builder or contractor). The installation instructions are only recommendations relating to the location and placement of rFOIL® Reflective Insulation products and rFOIL® makes no claims that these construction systems are universally accurate.
- b) All warranties are void if rFOIL® Reflective Insulation products are used in exterior applications, or in non-enclosed systems or buildings.
- c) Exercise caution when using rFOIL® Reflective Insulation products near and around electrical wiring and devices.

