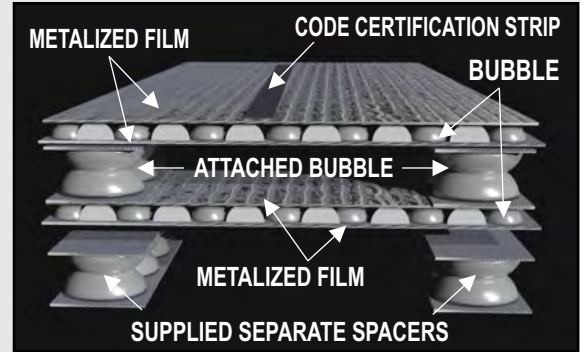


Product Description:

rFOIL® BIG-8 Reflective Duct Insulation consists of two layers of thick polyethylene bubble pack reflective insulation connected by 2-inch wide spacers.

Install the separate set of 2" Spacer Strips (included with the BIG-8 product) around the perimeter of the duct at 2ft intervals followed by wrapping the BIG-8 over the spacers. This product has on it a code certification strip that identifies the brand name and pertinent testing information for duct applications. This inspector friendly tape means no hassles at the jobsite and peace of mind for installers.

The BIG-8 Reflective Duct Insulation has been tested to an R-8.0 and is classified as Class 1/Class A in accordance with the ASTM E84 fire test standard. The product was mounted in accordance to ASTM-E2599.



Features:

- R-Value 8.0 (with Spacer Strips)
- No foam corner spacers needed
- Approved vapor barrier protection
- Thermal performance unaffected by moisture
- Inhibits condensation, mould and fungi growth
- Non-Toxic / Non-Carcinogenic
- Improves HVAC system efficiency



Applications:

- Duct Insulation with spacers (R-8.0)
- Duct Insulation without spacers (R-6.7)

Stock Roll Sizes:

Size:	48" x 50'	48" x 75'
Part No.	2280-48-050	2280-48-075

**BIG-8 is now ICC-ES listed (ESL-1044)
(ICC-ES Evaluation Report ESR-1236)**

PHYSICAL PROPERTIES	TEST	VALUE
THERMAL RESISTANCE	ASTM C335	R-8.0 with BUBBLE SPACERS
TEMPERATURE RANGE	ASTM C411	-50°F to 180°F
FIRE RATING	ASTM E84-10	CLASS 1 / CLASS A
	CAN/ULC-S102-10	FLAME SPREAD = 15 / SMOKE DEVELOPED = 50
EMISSIVITY	ASTM C1371	0.04
REFLECTIVITY	ASTM E903	0.96
WATER VAPOR PERMEABILITY	ASTM E96	0.029 Perms
RESISTANCE TO FUNGI and BACTERIA	ASTM C1338	DOES NOT PROMOTE GROWTH
BLEEDING and DELAMINATION	ASTM C1224-03	NO BLEEDING or DELAMINATION
PLIABILITY	ASTM C1224-03	NO CRACKING
FIRE RATING - FULL ROOM BURN	NFPA 286	PASSES
TEMPERATURE and HUMIDITY RESISTANCE	ASTM C1258	EVIDENCE of DELAMINATION - NONE
		EVIDENCE of CORROSION - NONE
		LOSS of METALLIZATION - MINIMAL

