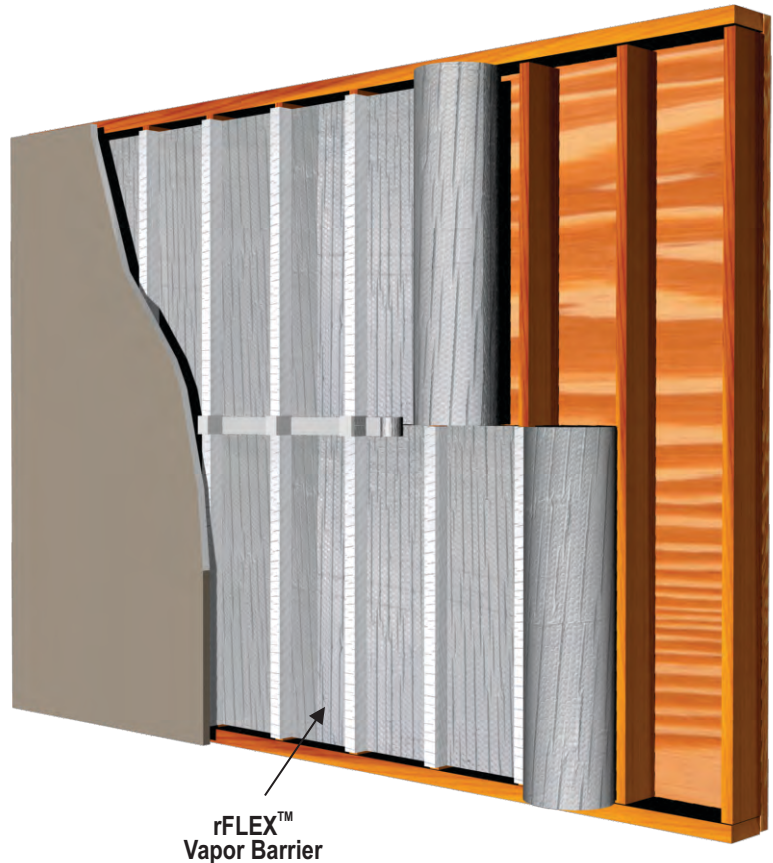


- QUICK, SAFE AND EASY TO INSTALL
- CREATES AN EFFECTIVE VAPOR BARRIER, WHILE ADDING R-VALUE
- REDUCES HEAT LOSS, AND HEAT GAIN ALL YEAR ROUND
- CAN BLOCK UP TO 97% OF RADIANT HEAT TRANSFER

### INSTALLATION METHOD

1. Install unfaced mass insulation in-between studs in accordance with the directions of the manufacturer.
2. Unroll rFOIL™ Reflective Vapor Barrier horizontally, and staple the product to the facing of the studs.
3. Start to staple at one end - continue to staple along the wall, ensuring that the RVB product is recessed into the wall cavity 1/4 - 1/2"
4. Seal all joints and seams in the Reflective Vapor Barrier using 3" rFOIL™ reflective tape (item no. 15513).
5. Install drywall or wall covering as you normally would.



### SUGGESTED PRODUCTS FOR THIS APPLICATION:

rFLEX™ INSULATION PRODUCT	3800-52-104S (Solid)
rFOIL™ TAPE	15513 (Aluminum)

- a) Check local building codes for compliance before installation. This installation sheet is intended solely to illustrate the proper location and placement of rFOIL™ Reflective Insulation products in specific constructions applications. They are not intended to illustrate proper construction methods (which is ultimately the responsibility of the builder or contractor). The installation instructions are only recommendations relating to the location and placement of rFOIL™ Reflective Insulation products and rFOIL™ makes no claims that these construction systems are universally accurate.
- b) All warranties are void if rFOIL™ Reflective Insulation products are used in exterior applications, or in non-enclosed systems or buildings.
- c) Exercise caution when using rFOIL™ Reflective Insulation products near and around electrical wiring and devices.



279 Humberline Drive Etobicoke, ON M9W 5T6  
 Call Toll Free: 1-800-837-8961 Local: 416-798-1340  
 Fax: 416-798-1342 Email: sales@rfoil.com  
**Visit our Website: [www.rfoil.com](http://www.rfoil.com)**

