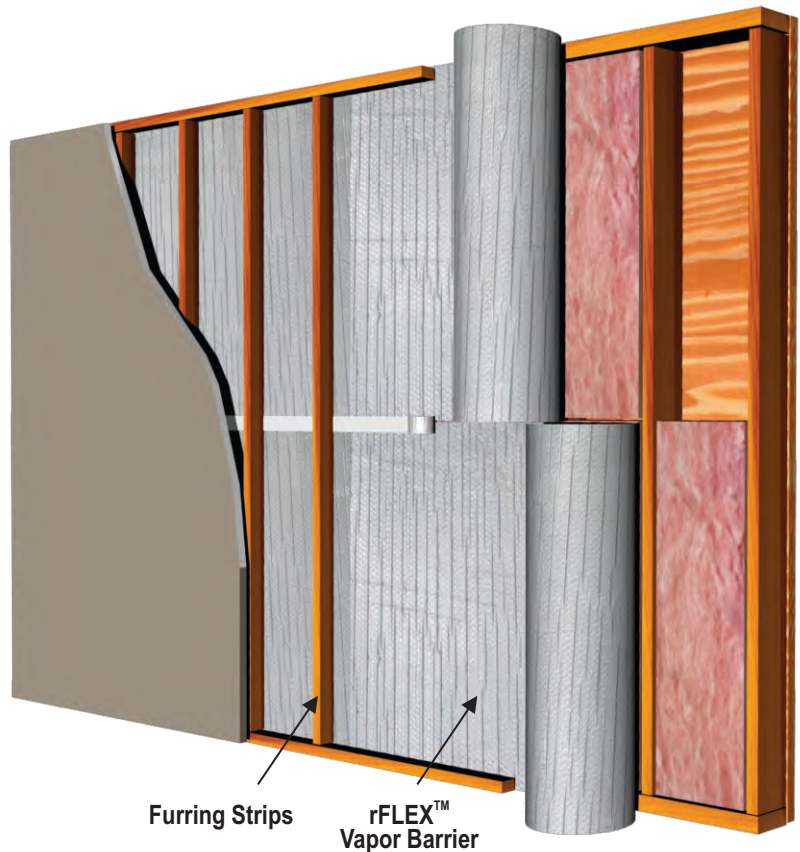


- QUICK, SAFE AND EASY TO INSTALL
- CREATES AN EFFECTIVE VAPOR BARRIER, WHILE ADDING R-VALUE
- REDUCES HEAT LOSS, AND HEAT GAIN ALL YEAR ROUND
- CAN BLOCK UP TO 97% OF RADIANT HEAT TRANSFER

INSTALLATION METHOD

1. Install unfaced mass insulation in-between studs in accordance with the directions of the manufacturer.
2. Unroll rFLEX™ Reflective Vapor Barrier horizontally, and staple the product to the studs.
3. Seal all joints and seams in the Reflective Vapor Barrier using 3" rFOIL™ reflective tape (item no. 15513).
4. Place 2"x2" furring strips on top of the Reflective Vapor Barrier and secure them to wood studs underneath (resulting in the rFLEX™ vapor Barrier being sandwiched between the furring strips and wall studs).
5. Install drywall or wall covering as you normally would.



SUGGESTED PRODUCTS FOR THIS APPLICATION:

rFLEX™ INSULATION PRODUCT	3800-52-104S (Solid)
rFOIL™ TAPE	15513 (Aluminum)

- a) Check local building codes for compliance before installation. This installation sheet is intended solely to illustrate the proper location and placement of rFOIL™ Reflective Insulation products in specific constructions applications. They are not intended to illustrate proper construction methods (which is ultimately the responsibility of the builder or contractor). The installation instructions are only recommendations relating to the location and placement of rFOIL™ Reflective Insulation products and rFOIL™ makes no claims that these construction systems are universally accurate.
- b) All warranties are void if rFOIL™ Reflective Insulation products are used in exterior applications, or in non-enclosed systems or buildings.
- c) Exercise caution when using rFOIL™ Reflective Insulation products near and around electrical wiring and devices.



279 Humberline Drive Etobicoke, ON M9W 5T6
 Call Toll Free: 1-800-837-8961 Local: 416-798-1340
 Fax: 416-798-1342 Email: sales@rfoil.com
Visit our Website: www.rfoil.com

