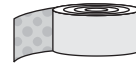
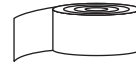


(1) 4' x 16' Foil Reflective Insulation

**Kit Includes:**



(4) 2" x 8' foil Bubble rFOIL™ Spacer

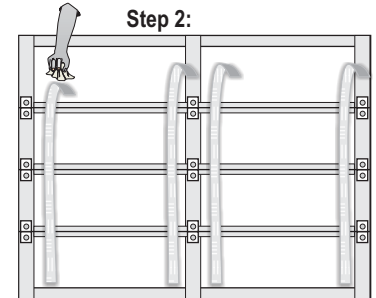
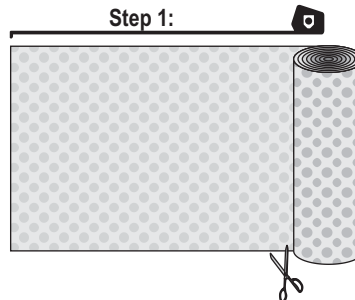


(1) 1" x 64' Double Sided Tape

**Instructions for a Single Car Garage Door Kit**

**Step 1:**

- 1) a) Measure the length of your garage door.
- b) From the 4' x 16' roll of rFOIL cut two pieces of equal length measured in step 1a), those will be used as the right and left pieces.

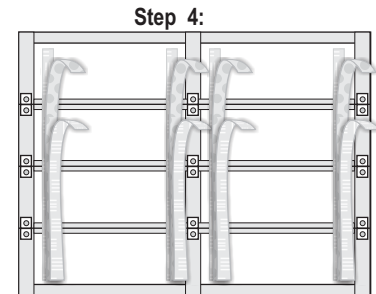
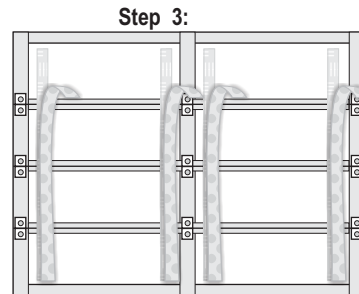


**Step 2:**

- 2) a) Make Sure the garage door surface is clean and dry.
- b) Apply 4 stripes of double-coated adhesive tape vertically to the door.
- c) Allow equal space between the tape.
- d) Apply the two outer stripes of tape as close to the outside of the door as possible (do not interfere with rollers or hinges).

**Step 3:**

- 3) Firmly apply the rFOIL spacers to the adhesive tape.



**Step 4:**

- 4) Firmly adhere a second layer of double coated tape to the rFOIL Spacers.

**Step 5:**

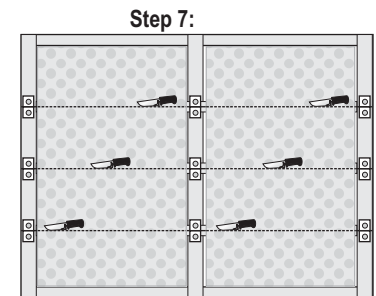
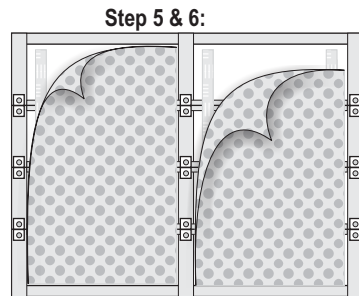
- 5) Vertically apply one of the 4' Foil Single Bubble rFOIL pieces (previously cut in step 1b) to the left half of the door.

**Step 6:**

- 6) Repeat step 5 for the right half of the garage door.

**Step 7:**

- 7) To prevent buckling and stretching during opening / closing of the door, slice the rFoil material horizontally where garage door separates.



- a) Check local building codes for compliance before installation. This installation sheet is intended solely to illustrate the proper location and placement of rFOIL™ Reflective Insulation products in specific constructions applications. They are not intended to illustrate proper construction methods (which is ultimately the responsibility of the builder or contractor). The installation instructions are only recommendations relating to the location and placement of rFOIL™ Reflective Insulation products and rFOIL™ makes no claims that these construction systems are universally accurate.
- b) All warranties are void if rFOIL™ Reflective Insulation products are used in exterior applications, or in non-enclosed systems or buildings.
- c) Exercise caution when using rFOIL™ Reflective Insulation products near and around electrical wiring and devices.

