



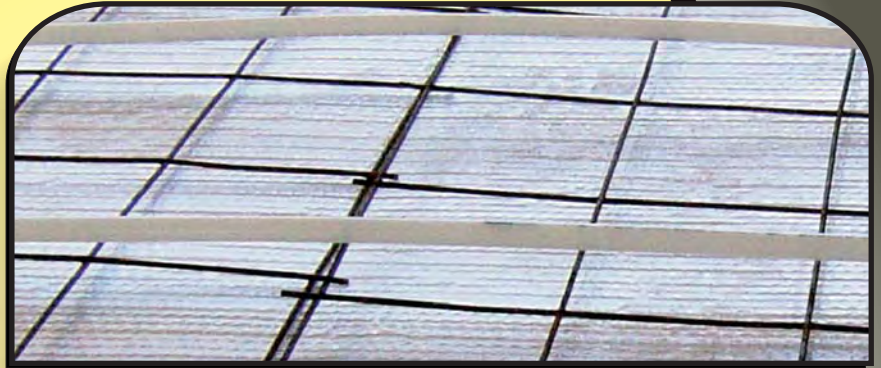
## Concrete Underpad

### rFOIL Applications:

- Insulating Under Concrete Slabs
- Beneath Concrete Over-Pours
- Edge-Slabs and Expansion Joints

### Benefits of rFOIL™ ?

- Reduces Radiant Heat Loss through Floors
- High-Strength, Multi-Layer Vapor and Radon Barrier (7 mil)
- Cost-Effective Alternative to Rigid Foam Insulation
- Improves Efficiency of In-Floor Radiant Heating Systems
- Reduces Slab Reaction Time at System Startup
- Saves Energy Usage and Utility Costs
- Easy to Form around Obstructions
- Installs Easily Over any Grade
- Withstands Job Site Traffic



rFOIL™ Concrete Underpad is an outstanding reflective insulation and puncture-resistant vapor barrier. It is composed of a double layer of high-strength polyethylene bubbles (up to 60 psi), sandwiched between one layer of metalized aluminum, and a layer of clear polyethylene.

rFOIL™ Concrete Underpad provides exceptional thermal value and a strong, permanent vapor and radon barrier. It is a cost-effective alternative to rigid foam insulation, and is always installed with the clear side facing upwards.



**FEATURES** **BENEFITS**

<b>Reflective Metalized Aluminum Facing (installed facing down)</b>	<ul style="list-style-type: none"> <li>- Reduces Radiant Heat Loss</li> <li>- Redirects Radiant Heat Energy Back to Living Area</li> <li>- Saves Energy Usage and Lowers Heating Costs</li> <li>- Extends Life of Heating System</li> <li>- Faster Reaction Time for Radiant Floor Heating</li> </ul>
<b>Clear Polyethylene Facing</b>	<ul style="list-style-type: none"> <li>- Unaffected by Lime and other Corrosive Chemicals, often Found in Concrete.</li> </ul>
<b>Multi-Layer 7 mil Bubble Core</b>	<ul style="list-style-type: none"> <li>- Provides Continuous Thermal Break below the Slab</li> <li>- Keeps underground moisture away from slab</li> <li>- Durable and Long-Lasting Polyethylene</li> <li>- Strong Puncture Resistance and Tear Strength</li> <li>- Outstanding Vapor and Radon Barrier</li> <li>- Can also Insulate the Edge-Slab and Outside of Foundation</li> </ul>
<b>Lightweight, Flexible Materials</b>	<ul style="list-style-type: none"> <li>- Just Unroll, Overlap, and Tape the Seams</li> <li>- Easy to Cut and Configure around Obstructions</li> <li>- Ideal for Edge-Slab Insulation and Expansion Joint (Easily Folds Upward at Perimeter Footing)</li> </ul>

**PRODUCTS** **SPECIFICATIONS**

**AVAILABLE IN:**

- Configurations: Square Edge
- Width: 48"
- Length: 125'



Physical Properties	Test	Double Layer
NOMINAL THICKNESS	—	5/16"
FIRE RATING	ASTM E84-09	CLASS 1 / CLASS A
EMISSIVITY	ASTM C1371-04A	0.057
REFLECTIVITY	ASTM E903	0.943
WATER VAPOR PERMEABILITY	ASTM E96	0.42 Perms
RESISTANCE TO FUNGI & BACTERIA	ASTM C1149	DOES NOT PROMOTE GROWTH
PLIABILITY	ASTM C1224-03	NO CRACKING
BLEEDING AND DELAMINATION	ASTM C1224-03	NO BLEEDING OR DELAMINATION
CORROSIVENESS	ASTM D3310-00	PASS

Specific Applications and Installation Guides can be found on our Applications Manuals or at [www.rfoil.com](http://www.rfoil.com)



**More Benefits**

- Warmer, More Comfortable Floors
- Conforms Easily to Uneven Grades
- Strongly Bonded to Resist Delamination
- Sealed Seams Provide a Consistent Insulation

10/09



279 Humberline Drive Etobicoke, ON M9W 5T6  
In CANADA: 1-800-837-8961 In US: 1-888-887-3645  
Fax: 416-798-1342 Email: [sales@rfoil.com](mailto:sales@rfoil.com) Website: [www.rfoil.com](http://www.rfoil.com)