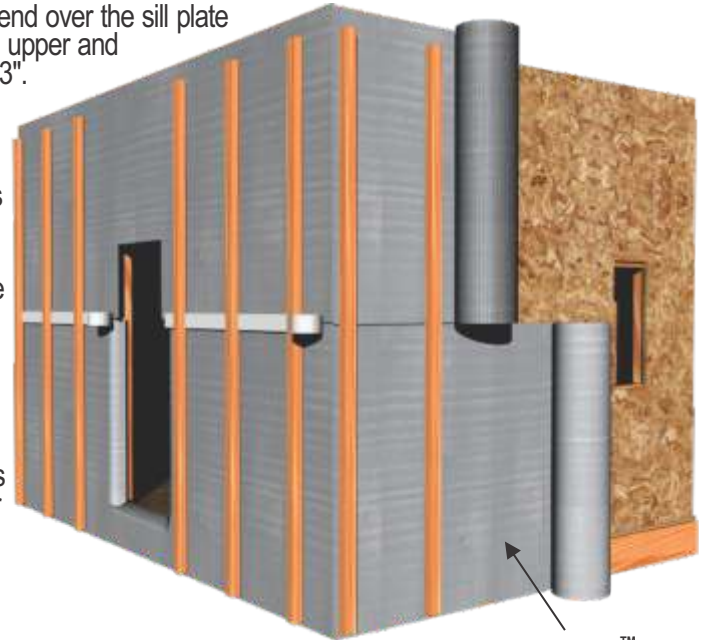


- QUICK AND EASY TO INSTALL
- REDUCES RADIANT HEAT LOSS, AND HEAT GAIN
- CAN INCREASE THE PERFORMANCE OF WALL INSULATION BY UP TO 20%
- PERM RATING OF 22 ALLOWS FOR THE TRANSMISSION OF WATER VAPOR

INSTALLATION METHOD

Page 1 of 3

1. Working from bottom to top, align the roll of housewrap with the first stud, and unroll the product from the corner - wrapping the home as you move around it; Ensure that the product is installed with the 'shiny' side facing out.
2. The lower edge of the reflective housewrap, should extend over the sill plate / foundation interface by 4"-6". Also make sure that the upper and lower sections of housewrap overlap each other by 2"-3".
3. Secure rFOIL™ reflective housewrap every 12"-18" on the vertical stud lines. With wood, insulated sheathing board, or exterior gypsum board - use large head or plastic washer head nails for best results. Wide staples with a minimum 1" crown, can also be used.
4. Unroll the housewrap directly over windows and doors without cutting- these openings can be cut out after the initial installation (see pg. 2).
5. Be sure to install the reflective housewrap, so as to cover both top plates.
6. As a best practice, all seams in the reflective housewrap should be sealed using rFOIL™ Tape. This includes all horizontal overlap joints between the upper and lower layers of housewrap, as well as all vertical joints.



rFOIL™ House Wrap

TAPE TIPS

- For maximum protection against moisture and air infiltration, repair all accidental tears and punctures with rFOIL™ Tape.
- Use the tape in any area which may need reinforcement, including cut corners around windows and doors.
- Typical usage: Two rolls of rFOIL™ Tape, for each roll of Reflective House Wrap

SUGGESTED PRODUCTS FOR THIS APPLICATION:

rFOIL™ INSULATION PRODUCT	3800-54-200P (Perforated)
rFOIL™ TAPE	15513 (Aluminum)

- a) Check local building codes for compliance before installation. This installation sheet is intended solely to illustrate the proper location and placement of rFOIL™ Reflective Insulation products in specific constructions applications. They are not intended to illustrate proper construction methods (which is ultimately the responsibility of the builder or contractor). The installation instructions are only recommendations relating to the location and placement of rFOIL™ Reflective Insulation products and rFOIL™ makes no claims that these construction systems are universally accurate.
- b) All warranties are void if rFOIL™ Reflective Insulation products are used in exterior applications, or in non-enclosed systems or buildings.
- c) Exercise caution when using rFOIL™ Reflective Insulation products near and around electrical wiring and devices.



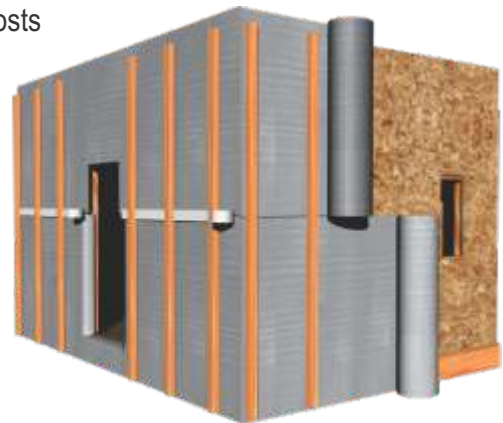
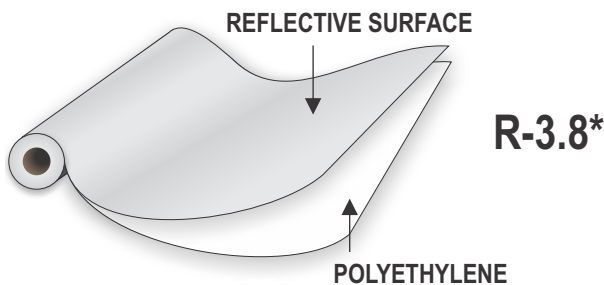
What is rFOIL™ Reflective House Wrap?

rFOIL™ Reflective House Wrap is the next generation in house wrap technology. This revolutionary new product offers the construction industry with a strong weather-resistant barrier, the added benefit of a Radiant Barrier, a tested R-3.8 value (ASHRAE Handbook: 1997 Fundamentals), and a Perm. Rating of 22.

rFOIL™ Reflective House Wrap is a single layer of 99.9% pure aluminum foil laminated to formulated blend of polyethylene and pin perforated. This results in a house wrap that acts not only as a superior air infiltration barrier, effectively sealing up cracks or gaps in the external sheathing, but it also adds a radiant barrier to the exterior of the home blocking up to 97% of radiant heat. This results in better year round efficiency and comfort levels. Also, unlike other house wraps or insulating products that are traditionally used, rFOIL™ Reflective House Wrap is non-toxic and its performance is not effected by extended exposure to the elements. This product is available in 54" x 200' rolls.

What are the main benefits of rFOIL™ Reflective House Wrap?

- Increases wall insulation efficiency by 20% and also stops 96% of Radiant Heat Transfer
- Reflects Heat out in Summer - Reduces Air Conditioning costs
- Reflects Heat back inside in Winter - Reduces Heating costs
- Increase overall Home Comfort



* ASHRAE Handbook: 1997 Fundamentals

Reflective House Wrap works against the Loss and Gain of Radiant Energy and provides an Air Infiltration Barrier

SUGGESTED PRODUCTS FOR THIS APPLICATION:

rFOIL™ INSULATION PRODUCT	3800-54-200P (Perforated)
rFOIL™ TAPE	15513 (Aluminum)

- a) Check local building codes for compliance before installation. This installation sheet is intended solely to illustrate the proper location and placement of rFOIL™ Reflective Insulation products in specific constructions applications. They are not intended to illustrate proper construction methods (which is ultimately the responsibility of the builder or contractor). The installation instructions are only recommendations relating to the location and placement of rFOIL™ Reflective Insulation products and rFOIL™ makes no claims that these construction systems are universally accurate.
- b) All warranties are void if rFOIL™ Reflective Insulation products are used in exterior applications, or in non-enclosed systems or buildings.
- c) Exercise caution when using rFOIL™ Reflective Insulation products near and around electrical wiring and devices.



When installing rFOIL™ Reflective House Wrap around the perimeter of the home - before windows and doors are installed - unroll the product directly over any openings as shown in Fig-1. Refrain from stretching the house wrap and ensure that there are no wrinkles or bubbles formed during the installation of the product. Fasten the product in place using appropriate nails or staples.

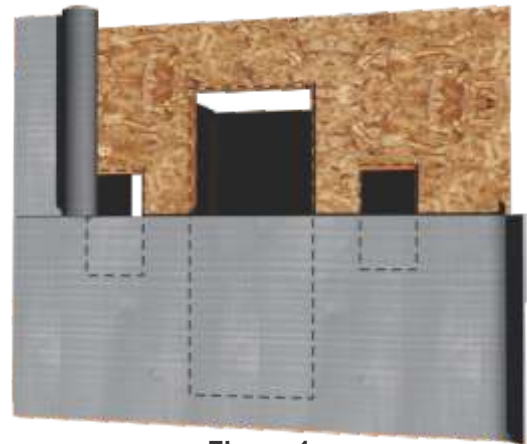


Figure 1

With the weather-resistant house wrap securely fastened to the exterior of the home, make a cut in the window & door openings as displayed in Fig-2. Make every effort not to cut beyond the borders of the opening, however in such an event, repair any tears or inadvertent damage with rFOIL™ Tape.

(see **SUGGESTED PRODUCTS FOR THIS APPLICATION** section for product and tape recommendations)

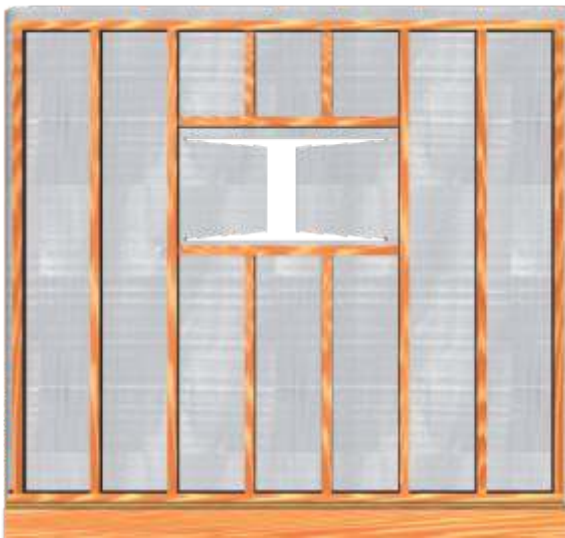


Figure 2

A flap should also be cut just above the rough opening to allow for the installation of head flashing. Carefully fold the side and bottom flaps into the opening as shown in Fig-3, and fasten the house wrap with staples or a caulking adhesive. Please be sure to follow the manufacturer's installation instructions when installing any windows, doors, and associated flashing material.

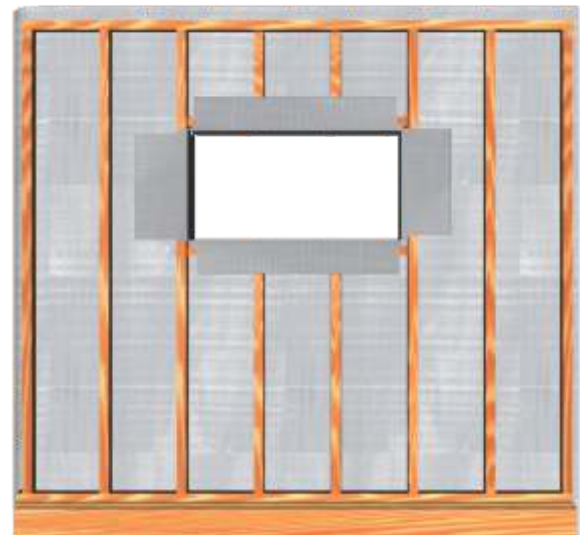


Figure 3

- a) Check local building codes for compliance before installation. This installation sheet is intended solely to illustrate the proper location and placement of rFOIL™ Reflective Insulation products in specific constructions applications. They are not intended to illustrate proper construction methods (which is ultimately the responsibility of the builder or contractor). The installation instructions are only recommendations relating to the location and placement of rFOIL™ Reflective Insulation products and rFOIL™ makes no claims that these construction systems are universally accurate.
- b) All warranties are void if rFOIL™ Reflective Insulation products are used in exterior applications, or in non-enclosed systems or buildings.
- c) Exercise caution when using rFOIL™ Reflective Insulation products near and around electrical wiring and devices.

